



## Step by Step Guide

For the best walk through watch our step by step video:



### Step 1

Remove TE-5070 Blower Motor assembly with TE-6003V Filter Holder



### Step 2

Remove TE-6001 Inlet



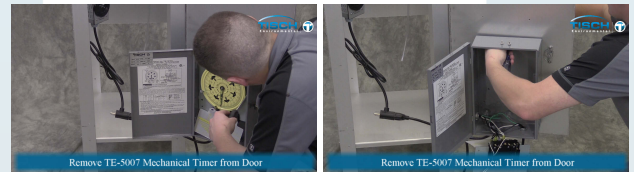
### Step 3

Remove TE-5009 Recorder from Door



### Step 4

Remove TE-5007 Mechanical Timer from Door



### Step 5

Remove TE-5012 Elapsed Time Indicator





## Step 6

Remove TE-5001-1 Shelter front



## Step 7

Replace shelter front with TE-5001-1-H Shelter Front



## Step 8

Replace shelter side for installation of the Temperature gill shield



## Step 9

Install Gill shield with thermocouple

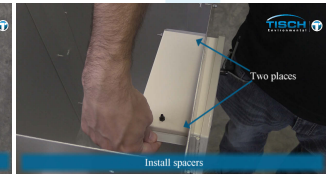
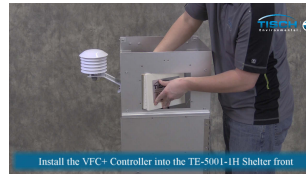
- a. Push wire through grommet hole
- b. Screw gill shield into place



## Step 10

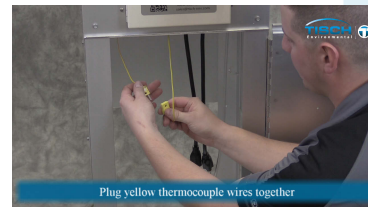
Install the VFC+ Controller into the TE-5001-1H Shelter front

**Make sure spacers are installed properly**



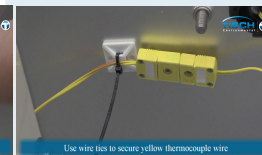
## Step 11

Plug yellow thermocouple wires together



## Step 12

Attach adhesive wire tie holders to side of shelter and use wire ties to secure yellow thermocouple wire



## Step 13

Replace the TE-6001 Inlet





## Step 14

Open TE-6001 Inlet

## Step 15

Replace TE-5070 Blower Motor assembly with TE-6003V Filter Holder

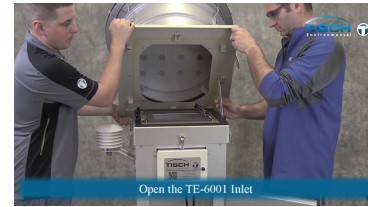
## Step 16

Attach clear tubing:

- One piece to the fitting on the bottom of the VFC+ controller
- One piece to the TE-6003V filter holder stagnation port
- Third piece is already attached to the instrument shelter
- Attach the open end of the three pieces of tubing to the black plastic 3-way T-connector

## Step 17

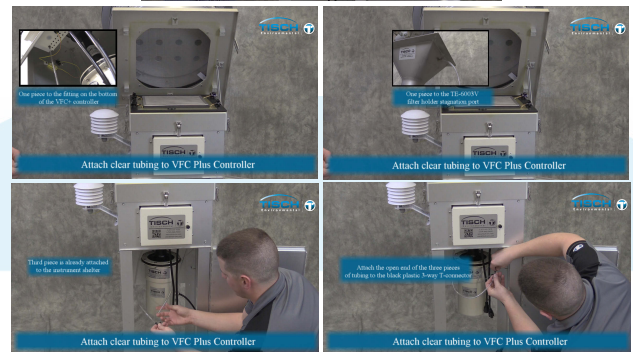
Plug Motor into VFC Plus Controller



Open the TE-6001 Inlet



Replace TE-5070 Blower Motor assembly with TE-6003V Filter Holder



Attach clear tubing to VFC Plus Controller

Attach clear tubing to VFC Plus Controller

Third piece is already attached to the instrument shelter

Attach the open end of the three pieces of tubing to the black plastic 3-way T-connector

Attach clear tubing to VFC Plus Controller

Attach clear tubing to VFC Plus Controller



Plug Motor into VFC Plus Controller